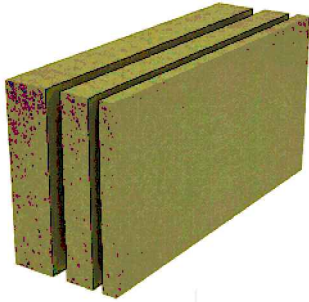




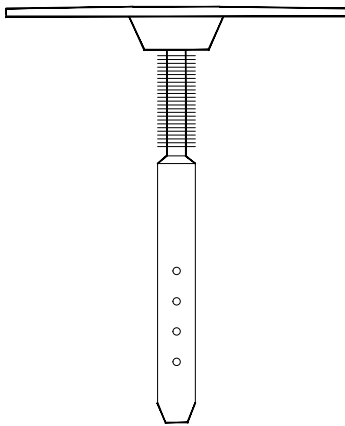
CMS50A WALLCLAD
Insulated Bonded Brick Slip
Cladding System

INSULATION

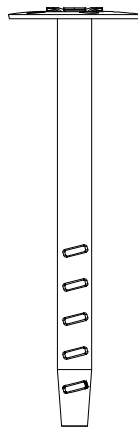


Description	Code
Terrawool Rainclad Plus 140 - 50mm	TWR140050
Terrawool Rainclad Plus 140 - 60mm	TWR140060
Terrawool Rainclad Plus 140 - 70mm	TWR140070
Terrawool Rainclad Plus 140 - 80mm	TWR140080
Terrawool Rainclad Plus 140 - 90mm	TWR140090
Terrawool Rainclad Plus 140 - 100mm	TWR1400100
Terrawool Rainclad Plus 140 - 110mm	TWR1400110
Terrawool Rainclad Plus 140 - 120mm	TWR1400120
Terrawool Rainclad Plus 140 - 130mm	TWR1400130
Terrawool Rainclad Plus 140 - 140mm	TWR1400140
Terrawool Rainclad Plus 140 - 150mm	TWR1400150

FIXINGS



Insulation
Support



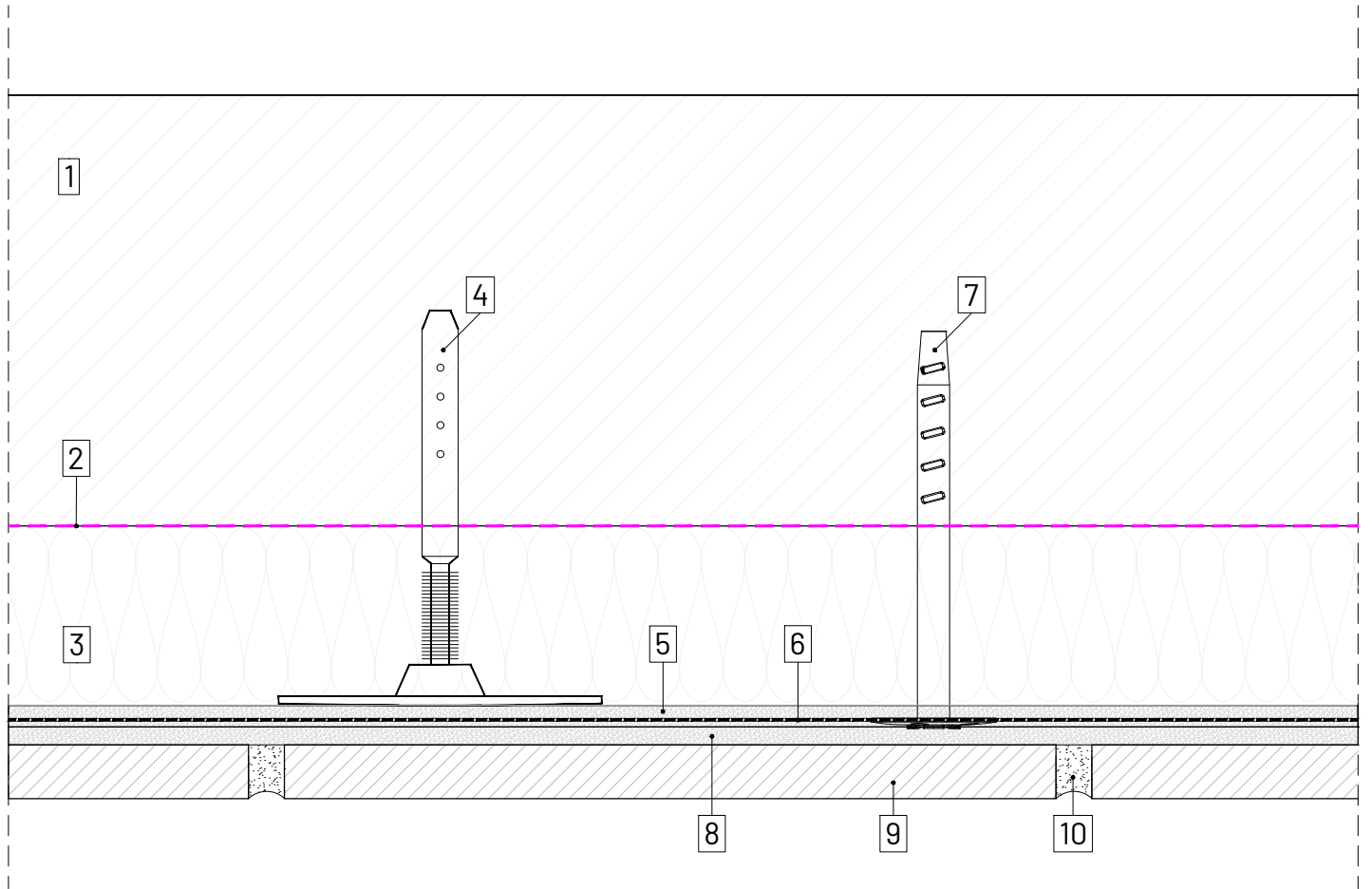
Metal Sheet
Support

Description	Code
Anchor	DMH 8/35 E
Plastic Washer	SBH T 65/25
Fastener	TKR 4.8
Fastener	JT2-D6-5.5/6.3

*Please refer to our CMS50 Wallclad Fixing Guide for fastener advice.

SEALENTS & ADHESIVES

Description	Code
Mineral Adhesive	-
Mesh 160	-
CM Primer	CM-P
CM Adhesive	CM-A



LEGEND

1. SUBSTRATE 2. BREATHER MEMBRANE by others 3. TERRAWOOL RAINCLAD PLUS 140 4. INSULATION SUPPORT FIXINGS
 5. SCRIM ADHESIVE 6. FIBRE REINFORCING MESH 7. FIBRE MESH FIXINGS 8. BRICK SLIP ADHESIVE 9. BRICK SLIP 10. POINTING MORTAR 11. STARTER PROFILE 12. FIRE RATED SILICONE JOINT SEALANT by others 13. JOINT SEALANT



www.cladmate.co.uk | technical@cladmate.co.uk

system title:
**INSULATED BONDED
 BRICK SLIP CLADDING SYSTEM**

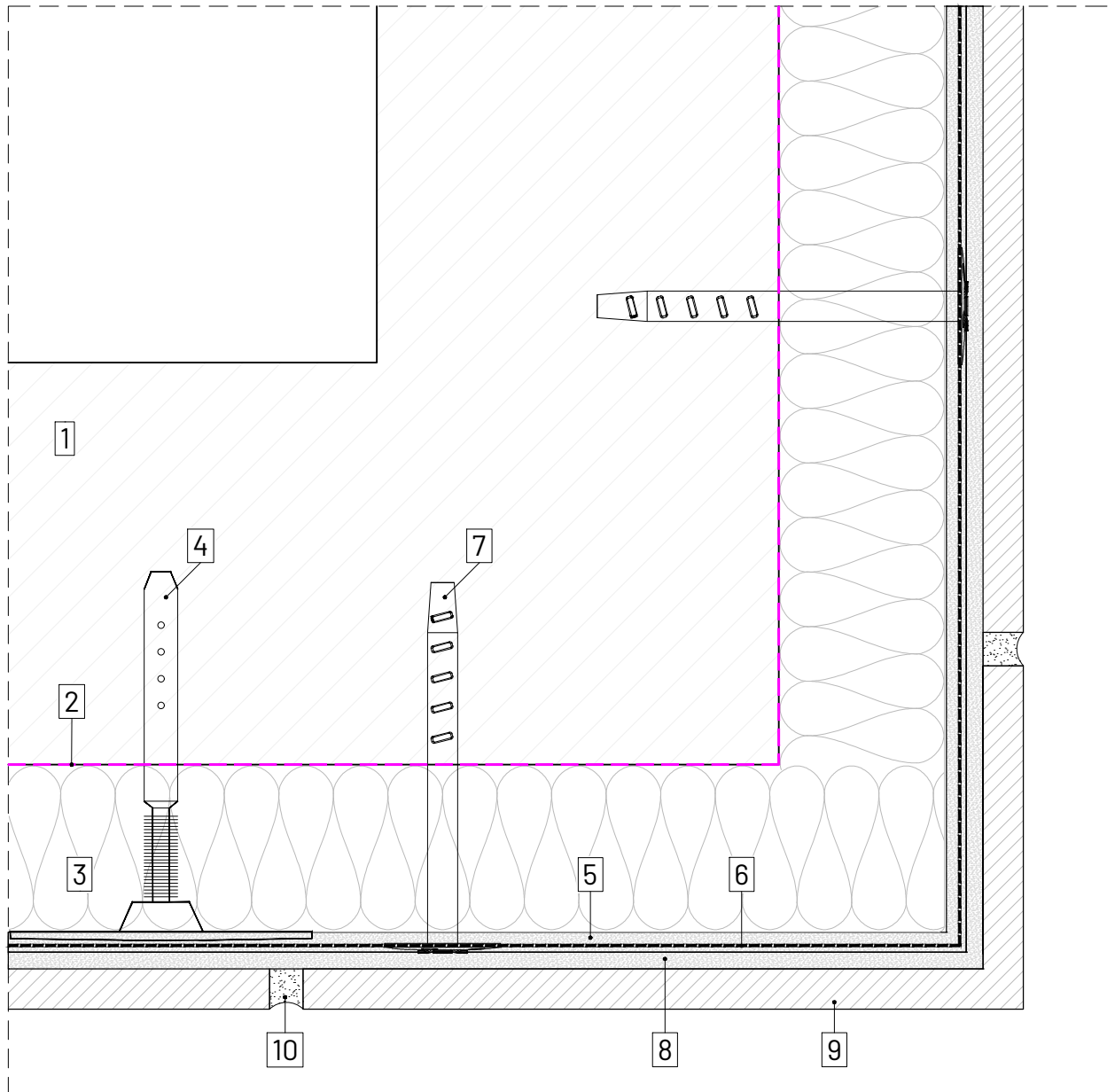
drawing title:
PLAN DETAIL

date:
 May 2022

scale:
 NTS
 @A4

system no:
 CMS-50A

drawing no: 01
 rev: X



LEGEND

- 1.** SUBSTRATE **2.** BREATHER MEMBRANE by others **3.** TERRAWOOL RAINCLAD PLUS 140 **4.** INSULATION SUPPORT FIXINGS
- 5.** SCRIM ADHESIVE **6.** FIBRE REINFORCING MESH **7.** FIBRE MESH FIXINGS **8.** BRICK SLIP ADHESIVE **9.** BRICK SLIP **10.** POINTING MORTAR **11.** STARTER PROFILE **12.** FIRE RATED SILICONE JOINT SEALANT by others **13.** JOINT SEALANT



www.cladmate.co.uk | technical@cladmate.co.uk

system title:
**INSULATED BONDED
 BRICK SLIP CLADDING SYSTEM**

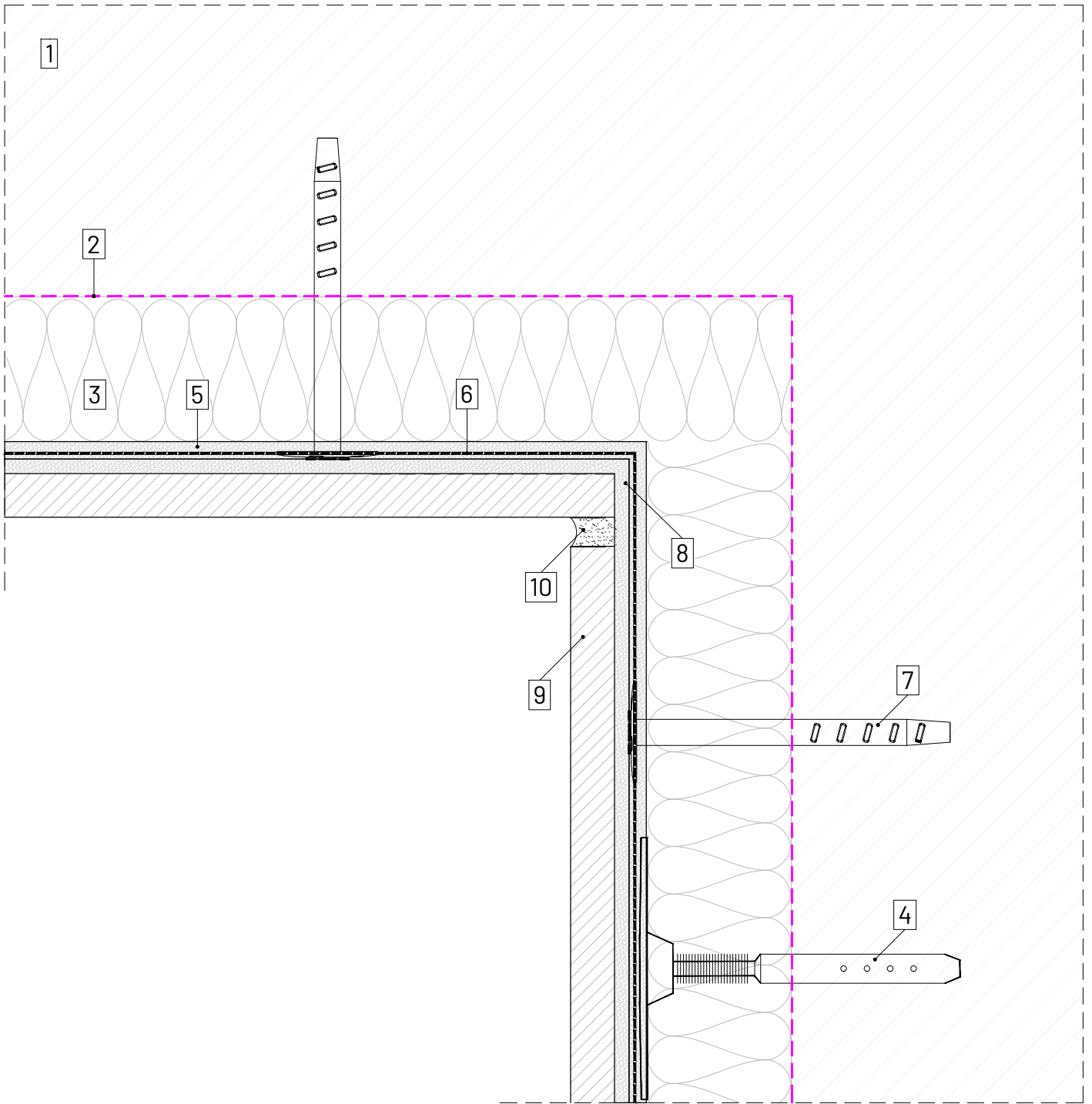
drawing title:
EXTERNAL CORNER DETAIL

date:
 May 2022

scale:
 NTS
 @A4

system no:
 CMS-50A

drawing no: rev:
 02 X



LEGEND

1. SUBSTRATE 2. BREATHER MEMBRANE by others 3. TERRAWOOL RAINCLAD PLUS 140 4. INSULATION SUPPORT FIXINGS
 5. SCRIM ADHESIVE 6. FIBRE REINFORCING MESH 7. FIBRE MESH FIXINGS 8. BRICK SLIP ADHESIVE 9. BRICK SLIP 10. POINTING MORTAR 11. STARTER PROFILE 12. FIRE RATED SILICONE JOINT SEALANT by others 13. JOINT SEALANT



www.cladmater.co.uk | technical@cladmater.co.uk

system title:
**INSULATED BONDED
 BRICK SLIP CLADDING SYSTEM**

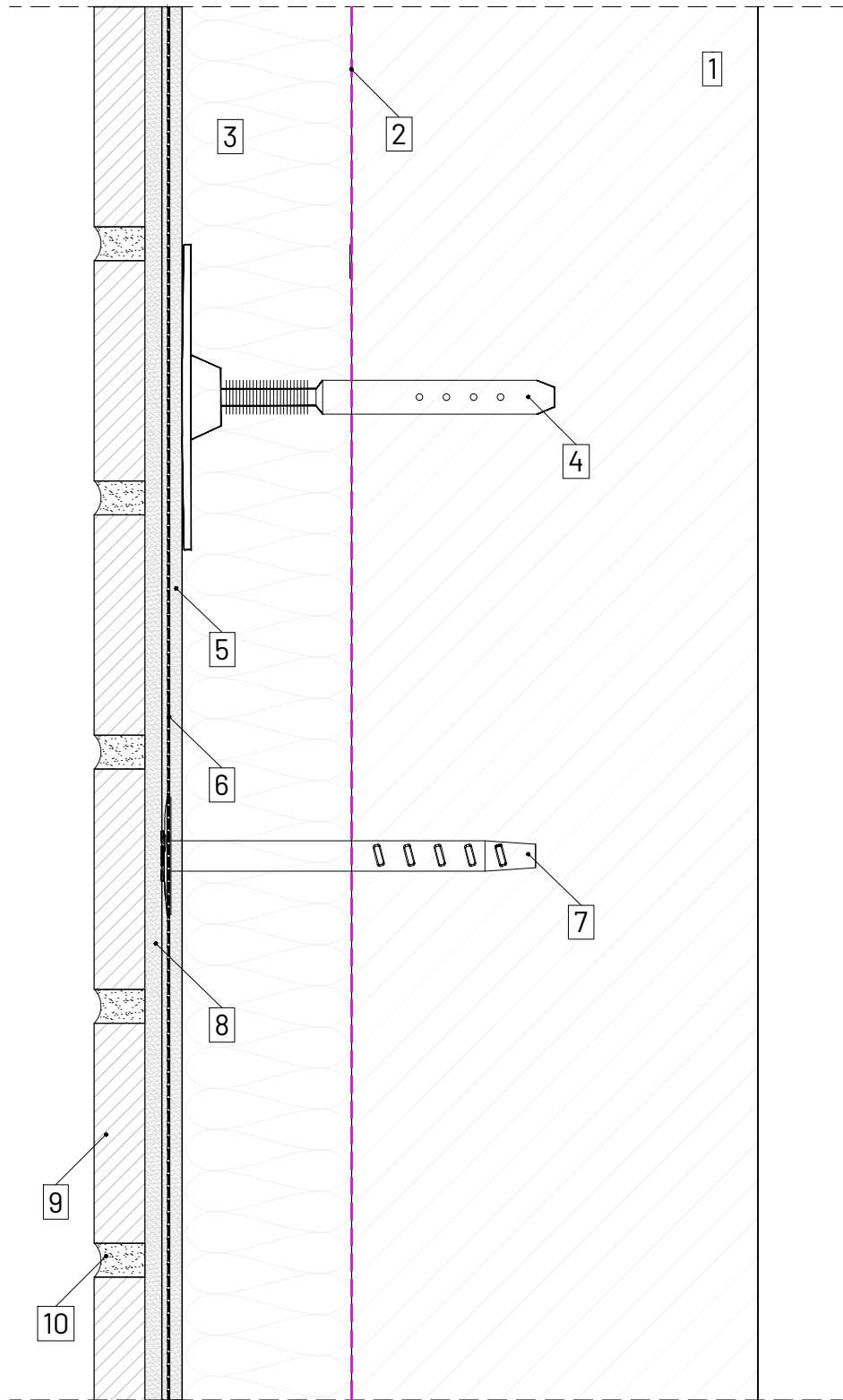
drawing title:
INTERNAL CORNER DETAIL

date:
 May 2022

scale:
 NTS
 @A4

system no:
 CMS-50A

drawing no: 03
 rev: X



LEGEND

1. SUBSTRATE 2. BREATHER MEMBRANE by others 3. TERRAWOOL RAINCLAD PLUS 140 4. INSULATION SUPPORT FIXINGS
 5. SCRIM ADHESIVE 6. FIBRE REINFORCING MESH 7. FIBRE MESH FIXINGS 8. BRICK SLIP ADHESIVE 9. BRICK SLIP 10. POINTING MORTAR 11. STARTER PROFILE 12. FIRE RATED SILICONE JOINT SEALANT by others 13. JOINT SEALANT



www.cladmate.co.uk | technical@cladmate.co.uk

system title:
**INSULATED BONDED
 BRICK SLIP CLADDING SYSTEM**

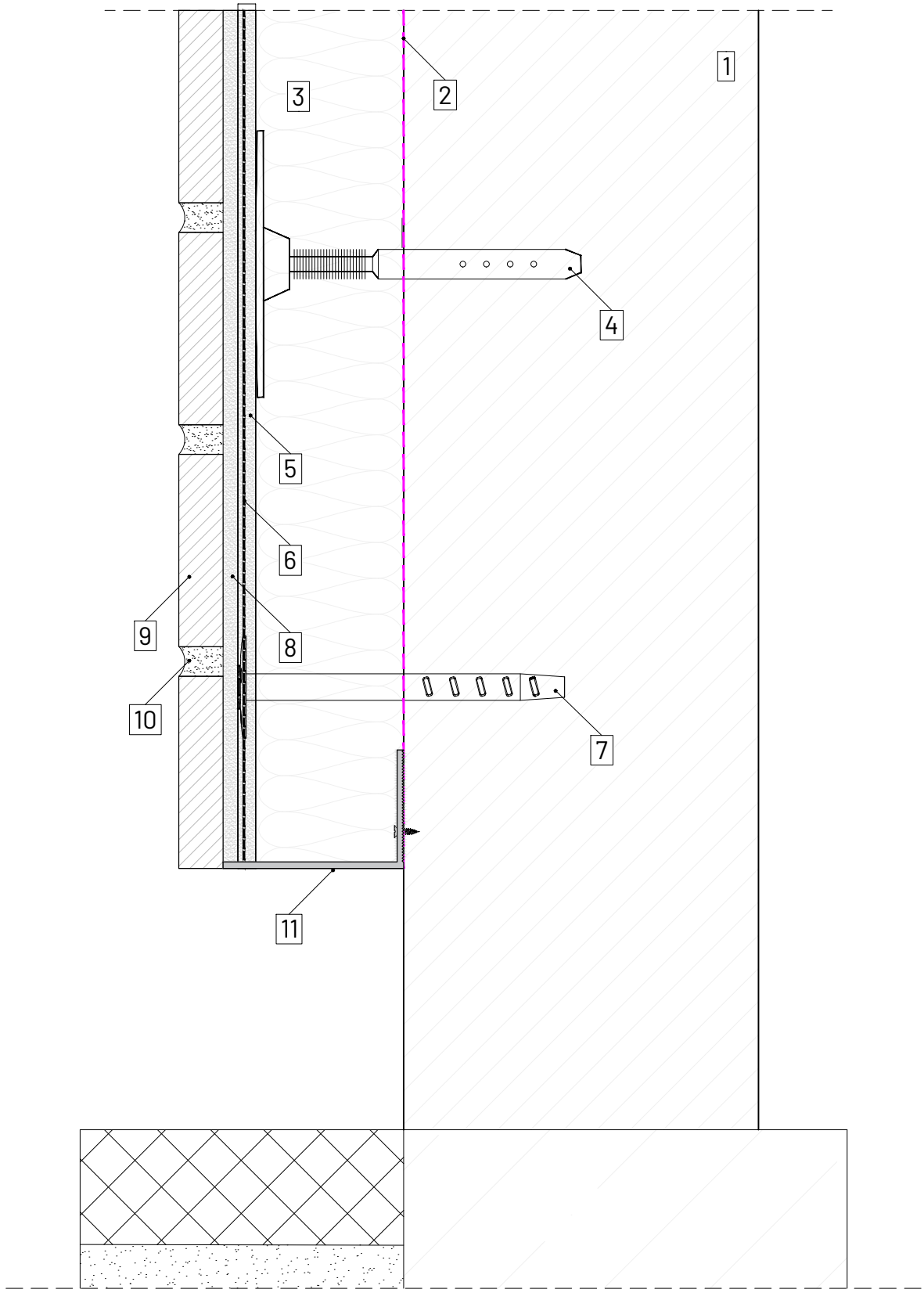
drawing title:
VERTICAL SECTION DETAIL

date:
 May 2022

scale:
 NTS
 @A4

system no:
 CMS-50A

drawing no: 04 rev: X



LEGEND

1. SUBSTRATE **2.** BREATHER MEMBRANE by others **3.** TERRAWOOL RAINCLAD PLUS 140 **4.** INSULATION SUPPORT FIXINGS
5. SCRIM ADHESIVE **6.** FIBRE REINFORCING MESH **7.** FIBRE MESH FIXINGS **8.** BRICK SLIP ADHESIVE **9.** BRICK SLIP **10.** POINTING MORTAR **11.** STARTER PROFILE **12.** FIRE RATED SILICONE JOINT SEALANT by others **13.** JOINT SEALANT



www.cladmate.co.uk | technical@cladmate.co.uk

system title:
**INSULATED BONDED
 BRICK SLIP CLADDING SYSTEM**

drawing title:
BASE DETAIL

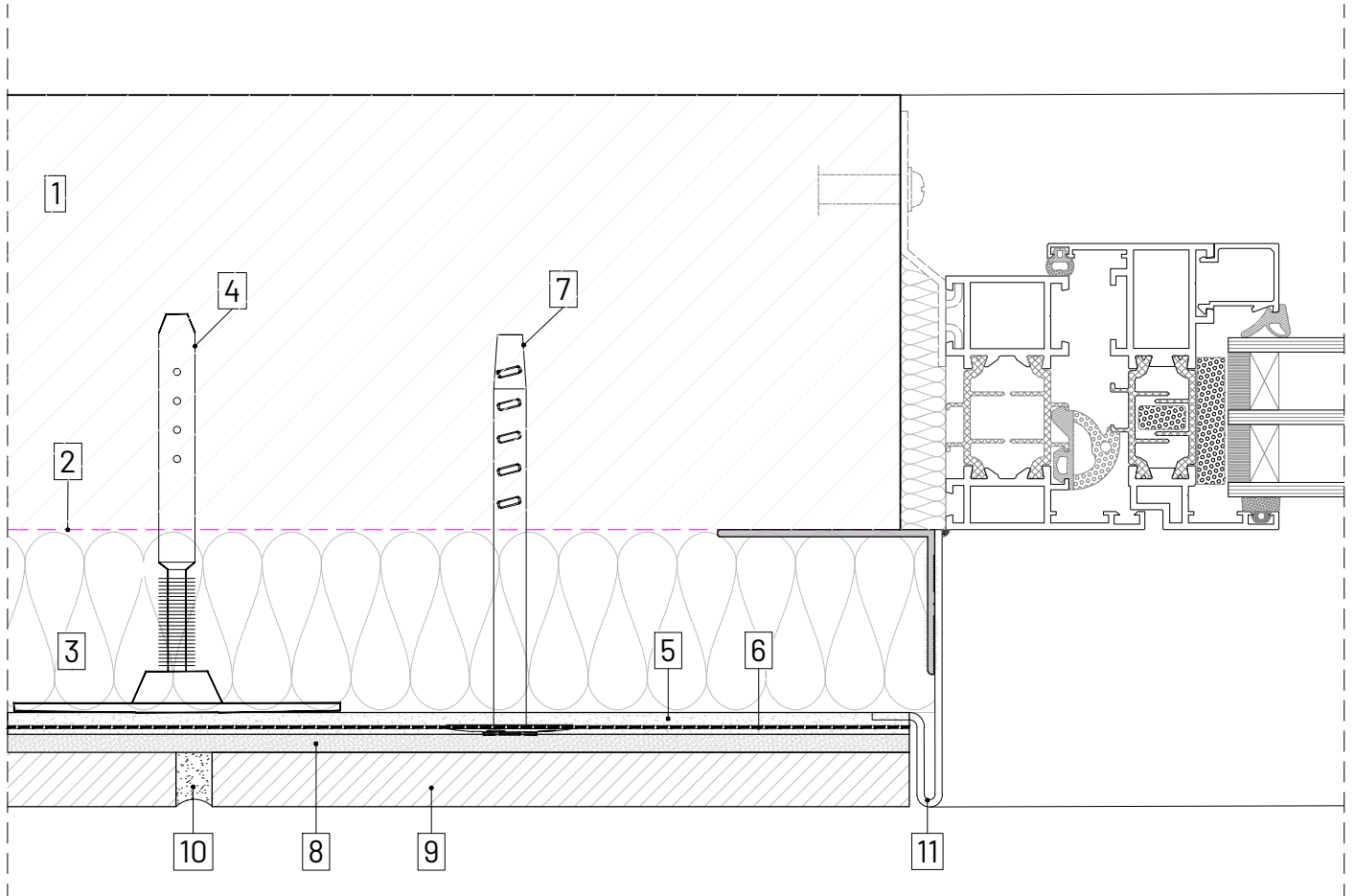
date:
 May 2022

scale:
 NTS
 @A4

system no:
 CMS-50A

drawing no:
 06

rev:
 X



LEGEND

- 1.** SUBSTRATE **2.** BREATHER MEMBRANE by others **3.** TERRAWOOL RAINCLAD PLUS 140 **4.** INSULATION SUPPORT FIXINGS
- 5.** SCRIM ADHESIVE **6.** FIBRE REINFORCING MESH **7.** FIBRE MESH FIXINGS **8.** BRICK SLIP ADHESIVE **9.** BRICK SLIP **10.** POINTING MORTAR **11.** STARTER PROFILE **12.** FIRE RATED SILICONE JOINT SEALANT by others **13.** JOINT SEALANT



www.cladmate.co.uk | technical@cladmate.co.uk

system title:
**INSULATED BONDED
 BRICK SLIP CLADDING SYSTEM**

drawing title:
WINDOW REVEAL DETAIL I

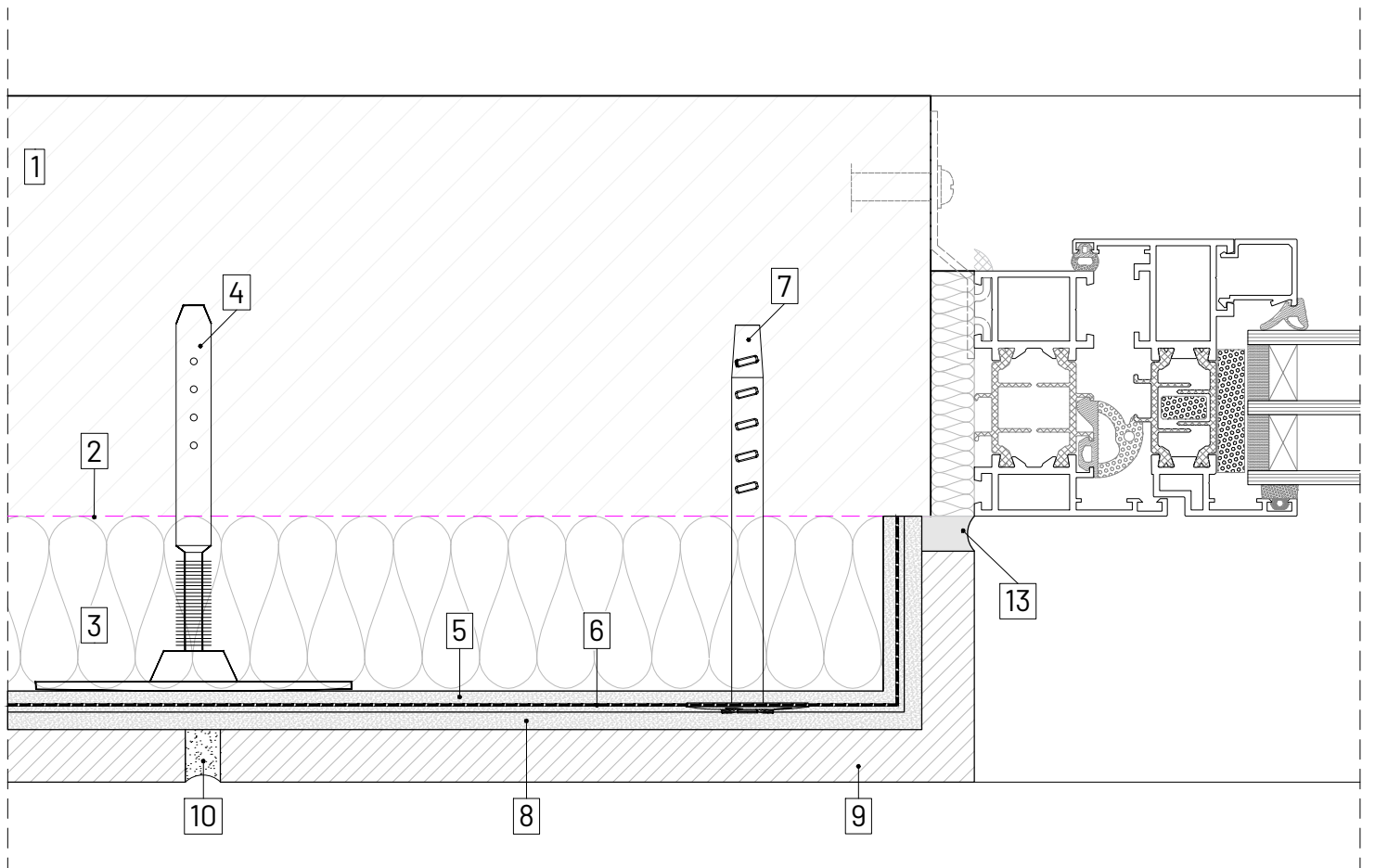
date:
May 2022

scale:
**NTS
 @A4**

system no:
CMS-50A

drawing no:
07A

rev:
X



LEGEND

1. SUBSTRATE **2.** BREATHER MEMBRANE by others **3.** TERRAWOOL RAINCLAD PLUS 140 **4.** INSULATION SUPPORT FIXINGS
5. SCRIM ADHESIVE **6.** FIBRE REINFORCING MESH **7.** FIBRE MESH FIXINGS **8.** BRICK SLIP ADHESIVE **9.** BRICK SLIP **10.** POINTING MORTAR **11.** STARTER PROFILE **12.** FIRE RATED SILICONE JOINT SEALANT by others **13.** JOINT SEALANT


 Facade Systems
 www.cladmate.co.uk | technical@cladmate.co.uk

system title:
**INSULATED BONDED
 BRICK SLIP CLADDING SYSTEM**

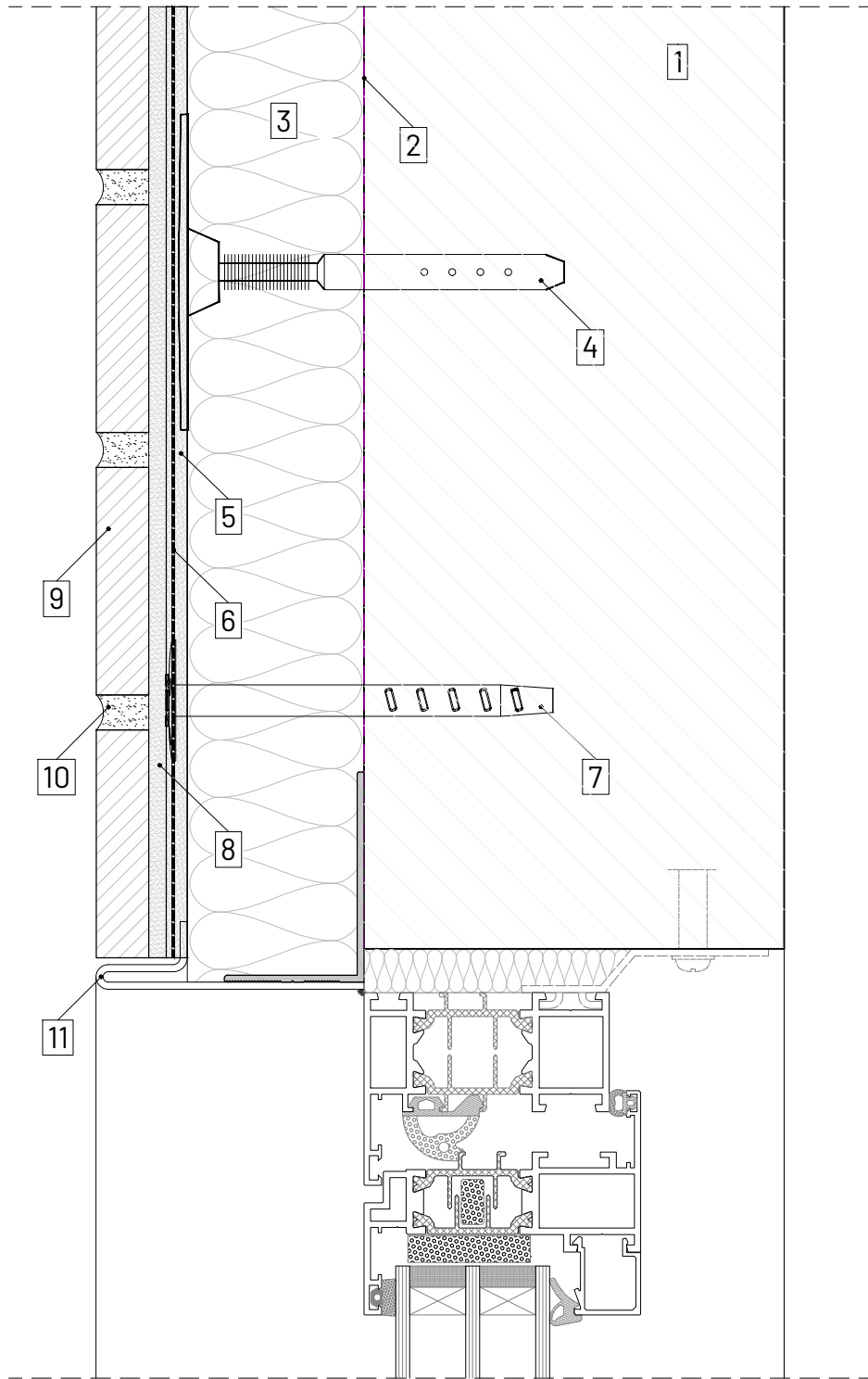
drawing title:
WINDOW REVEAL DETAIL II

date:
 May 2022

scale:
 NTS
 @A4

system no:
 CMS-50A

drawing no: rev:
 07B X



LEGEND

- 1.** SUBSTRATE **2.** BREATHER MEMBRANE by others **3.** TERRAWOOL RAINCLAD PLUS 140 **4.** INSULATION SUPPORT FIXINGS
- 5.** SCRIM ADHESIVE **6.** FIBRE REINFORCING MESH **7.** FIBRE MESH FIXINGS **8.** BRICK SLIP ADHESIVE **9.** BRICK SLIP **10.** POINTING MORTAR **11.** STARTER PROFILE **12.** FIRE RATED SILICONE JOINT SEALANT by others **13.** JOINT SEALANT



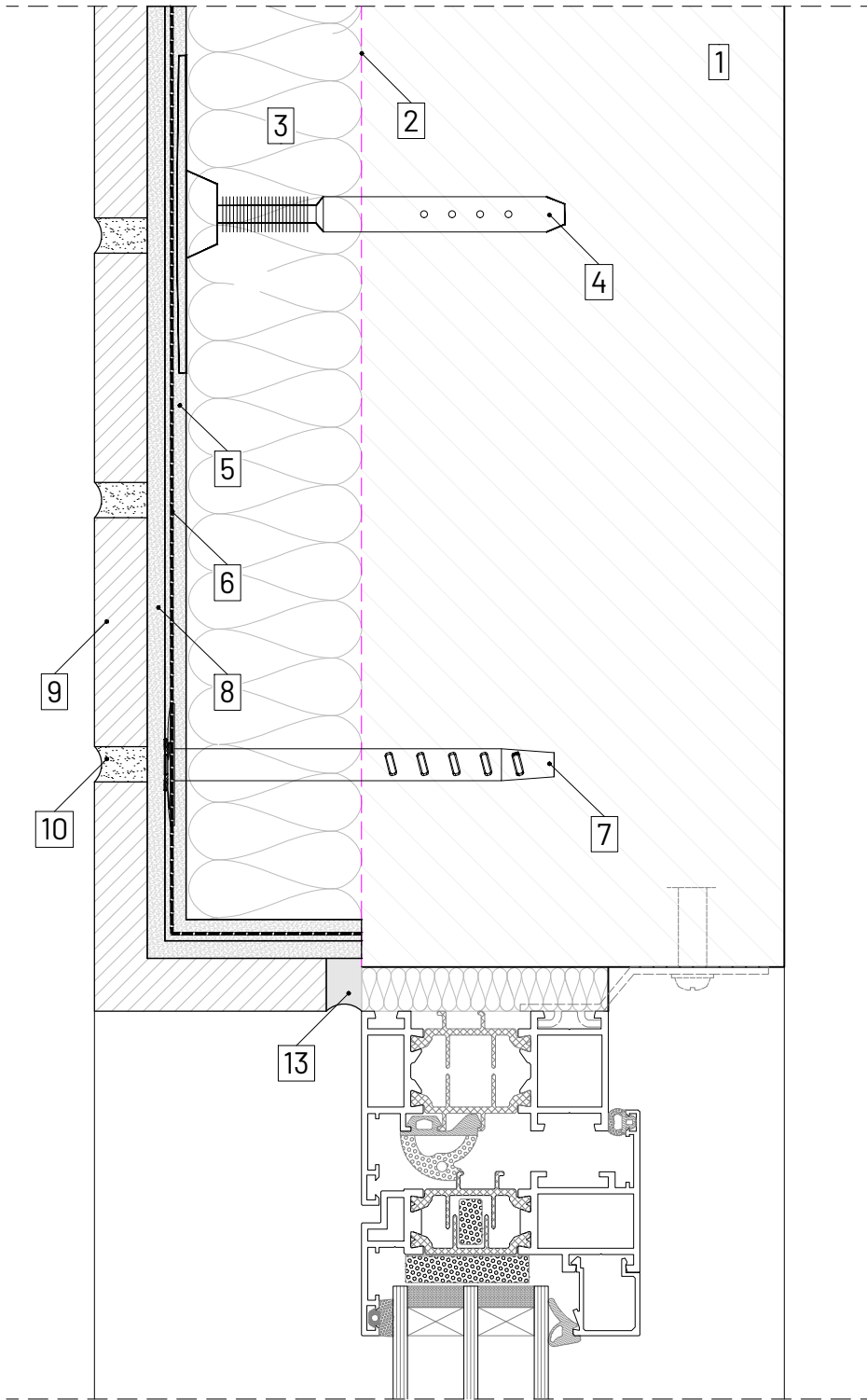
www.cladmater.co.uk | technical@cladmater.co.uk

system title:
**INSULATED BONDED
 BRICK SLIP CLADDING SYSTEM**

drawing title:
WINDOW HEAD DETAIL

date: May 2022 scale: NTS @A4

system no: CMS-50A drawing no: 08A rev: X



LEGEND

1. SUBSTRATE **2.** BREATHER MEMBRANE by others **3.** TERRAWOOL RAINCLAD PLUS 140 **4.** INSULATION SUPPORT FIXINGS
5. SCRIM ADHESIVE **6.** FIBRE REINFORCING MESH **7.** FIBRE MESH FIXINGS **8.** BRICK SLIP ADHESIVE **9.** BRICK SLIP **10.** POINTING MORTAR **11.** STARTER PROFILE **12.** FIRE RATED SILICONE JOINT SEALANT by others **13.** JOINT SEALANT


 Facade Systems

www.cladmate.co.uk | technical@cladmate.co.uk

system title:
**INSULATED BONDED
 BRICK SLIP CLADDING SYSTEM**

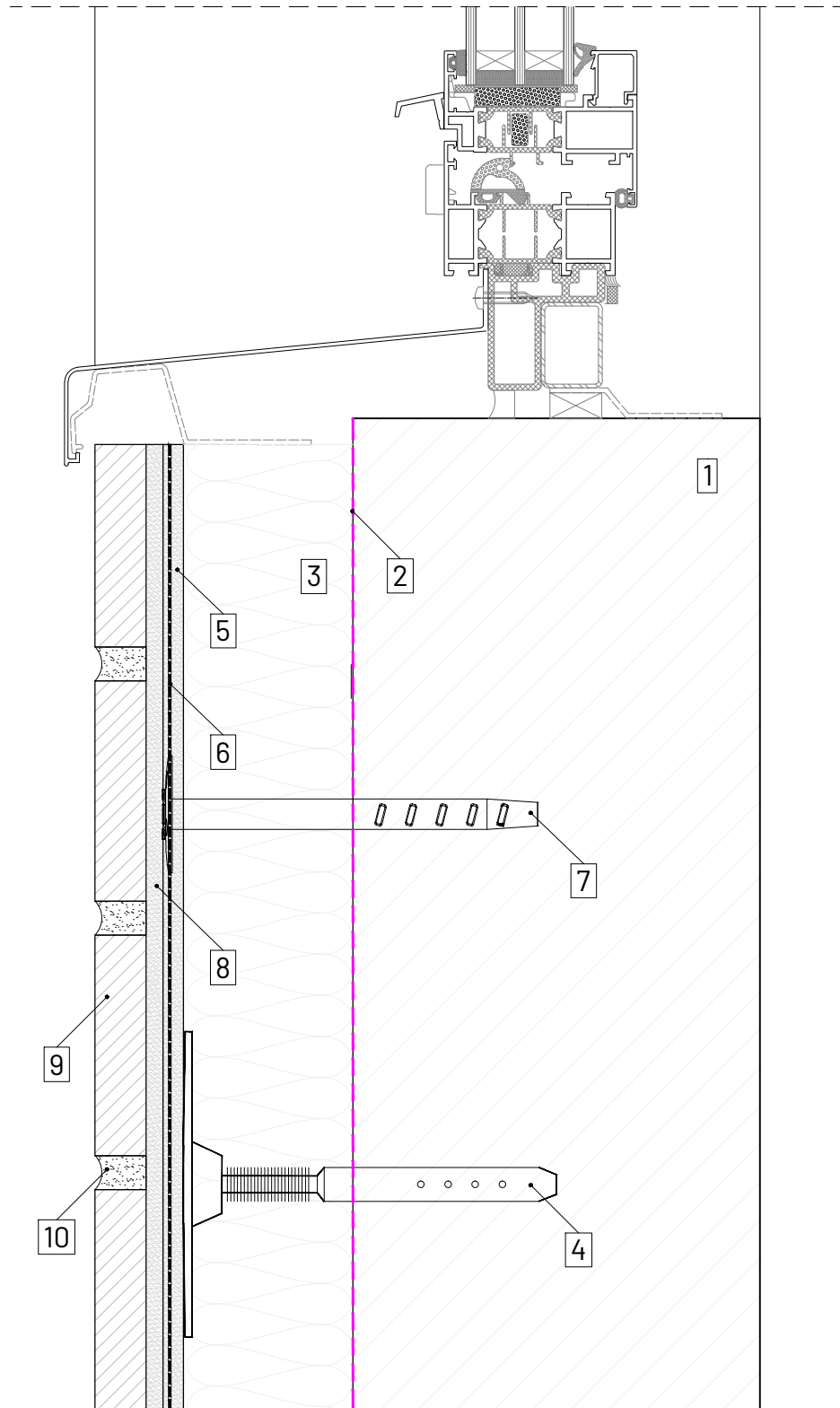
drawing title:
WINDOW HEAD DETAIL

date:
 May 2022

scale:
 NTS
 @A4

system no:
 CMS-50A

drawing no: 08B
 rev: X



LEGEND

- 1.** SUBSTRATE **2.** BREATHER MEMBRANE by others **3.** TERRAWOOL RAINCLAD PLUS 140 **4.** INSULATION SUPPORT FIXINGS
- 5.** SCRIM ADHESIVE **6.** FIBRE REINFORCING MESH **7.** FIBRE MESH FIXINGS **8.** BRICK SLIP ADHESIVE **9.** BRICK SLIP **10.** POINTING MORTAR **11.** STARTER PROFILE **12.** FIRE RATED SILICONE JOINT SEALANT by others **13.** JOINT SEALANT



www.cladmate.co.uk | technical@cladmate.co.uk

system title:
**INSULATED BONDED
 BRICK SLIP CLADDING SYSTEM**

drawing title:
WINDOW CILL DETAIL

date:
May 2022

scale:
**NTS
 @A4**

system no:
CMS-50A

drawing no: **09** rev: **X**