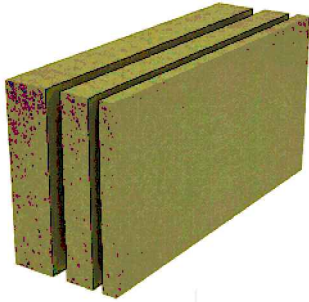




CMS50R WALLCLAD

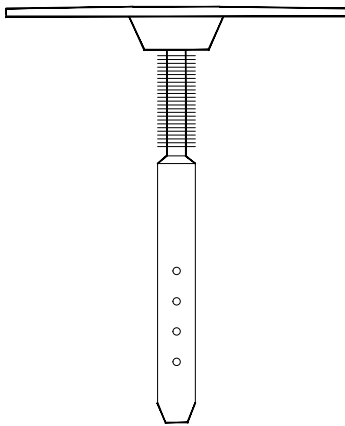
Insulated Render Cladding System

INSULATION

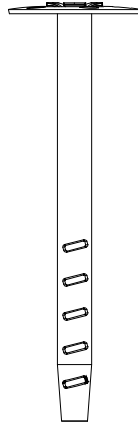


Description	Code
Terrawool Rainclad Plus 140 - 50mm	TWR140050
Terrawool Rainclad Plus 140 - 60mm	TWR140060
Terrawool Rainclad Plus 140 - 70mm	TWR140070
Terrawool Rainclad Plus 140 - 80mm	TWR140080
Terrawool Rainclad Plus 140 - 90mm	TWR140090
Terrawool Rainclad Plus 140 - 100mm	TWR1400100
Terrawool Rainclad Plus 140 - 110mm	TWR1400110
Terrawool Rainclad Plus 140 - 120mm	TWR1400120
Terrawool Rainclad Plus 140 - 130mm	TWR1400130
Terrawool Rainclad Plus 140 - 140mm	TWR1400140
Terrawool Rainclad Plus 140 - 150mm	TWR1400150

FIXINGS



Insulation
Support



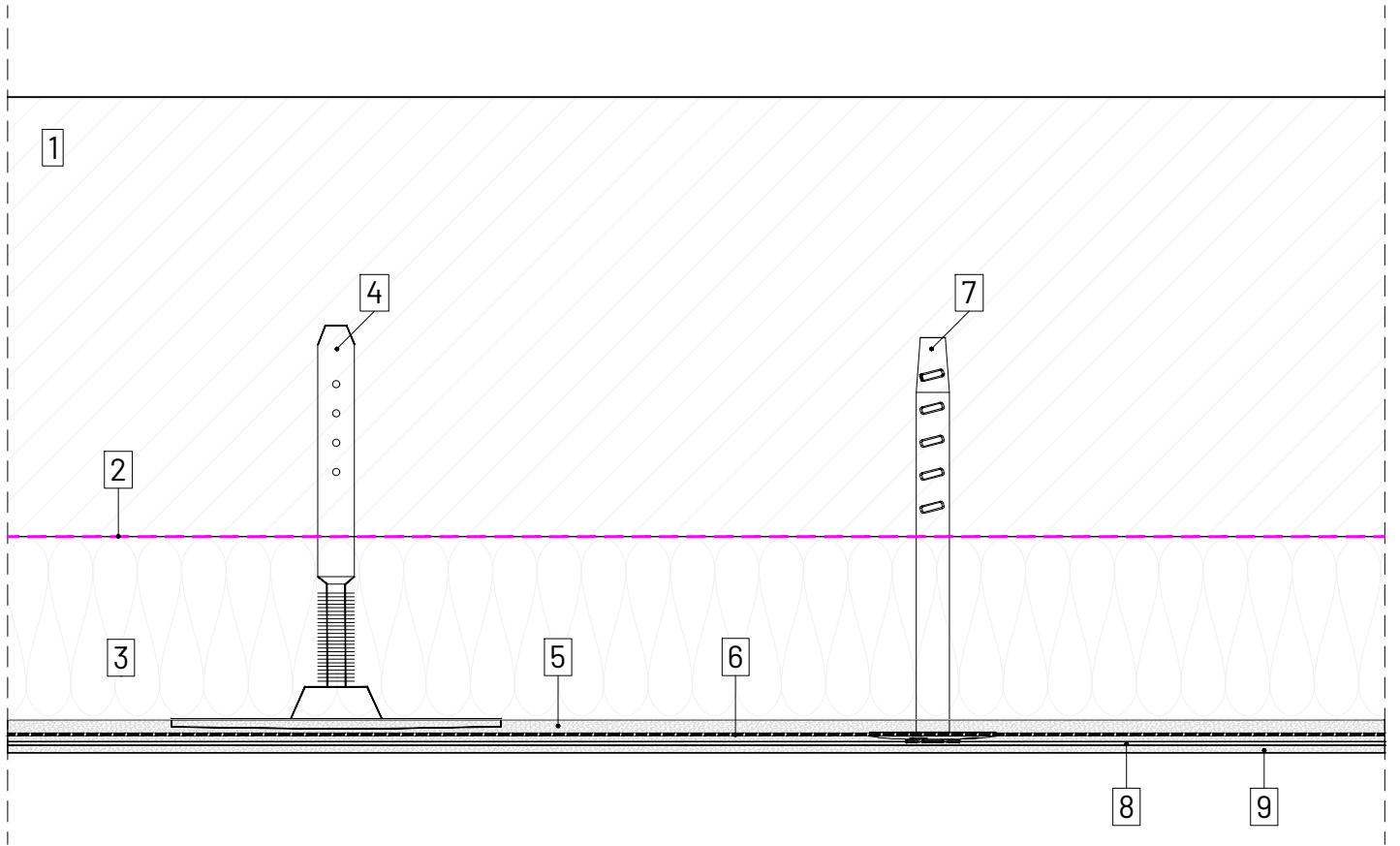
Mesh
Support

Description	Code
Anchor	DMH 8/35 E
Plastic Washer	SBH T 65/25
Fastener	TKR 4.8
Fastener	JT2-D6-5.5/6.3

*Please refer to our Fixing Guide for fastener advice.

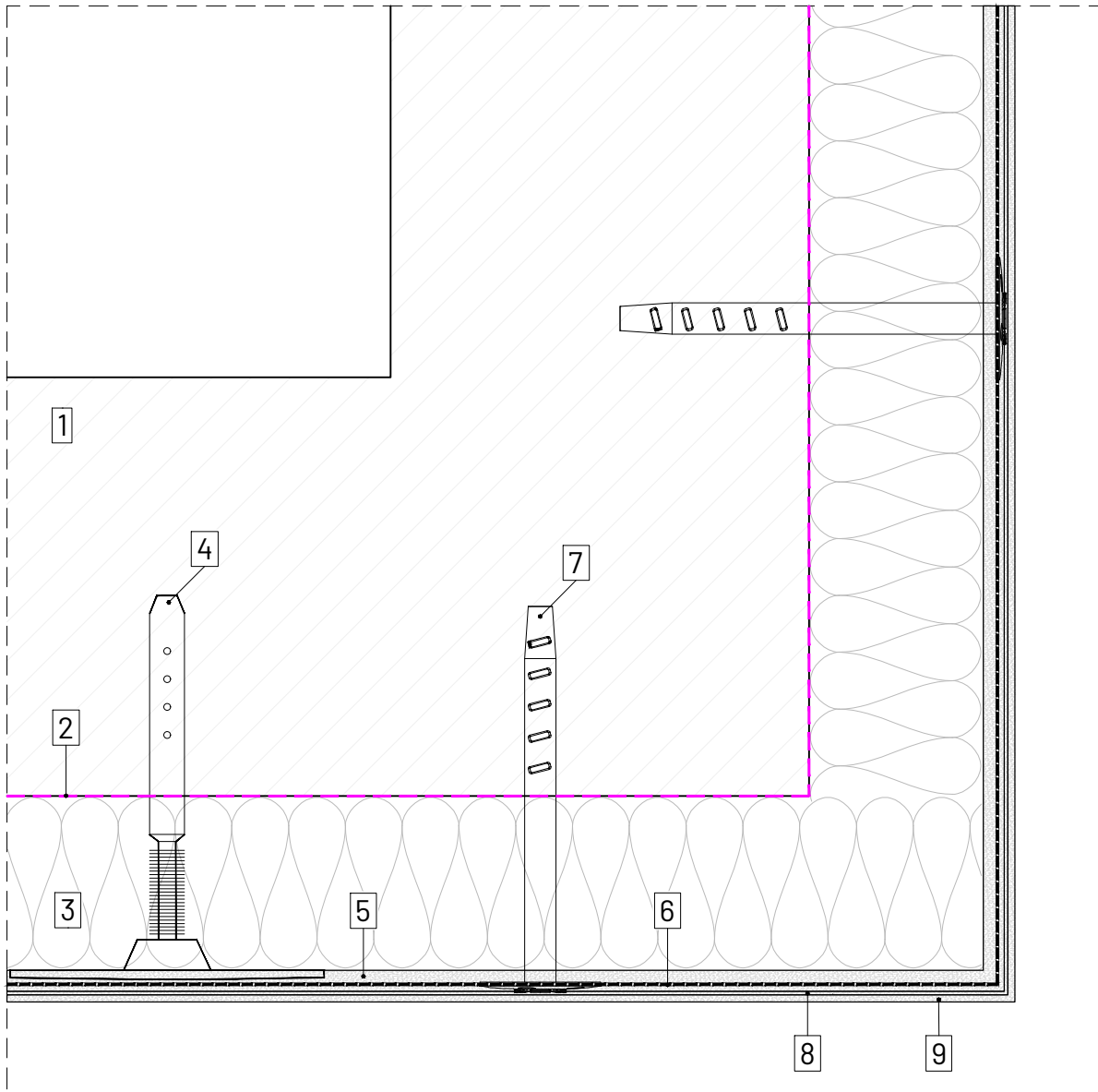
SEALENTS & ADHESIVES

Description	Code
Mineral Adhesive	-
Fibreglass Mesh 160	-
CM Primer	CM-P
Top Coat Render	-



LEGEND

1. SUBSTRATE 2. BREATHER MEMBRANE by others 3. TERRAWOOL RAINCLAD PLUS 140 4. INSULATION SUPPORT FIXINGS
 5. SCRIM ADHESIVE 6. FIBRE REINFORCING MESH 7. FIBRE MESH FIXINGS 8. PRIMER 9. RENDER 10. STARTER PROFILE 11. FIRE RATED SILICONE JOINT SEALANT by others 12. JOINT SEALANT



LEGEND

1. SUBSTRATE **2.** BREATHER MEMBRANE by others **3.** TERRAWOOL RAINCLAD PLUS 140 **4.** INSULATION SUPPORT FIXINGS
5. SCRIM ADHESIVE **6.** FIBRE REINFORCING MESH **7.** FIBRE MESH FIXINGS **8.** PRIMER **9.** RENDER **10.** STARTER PROFILE **11.** FIRE RATED SILICONE JOINT SEALANT by others **12.** JOINT SEALANT



www.cladmate.co.uk | technical@cladmate.co.uk

system title:
INSULATED RENDER CLADDING SYSTEM

drawing title:
EXTERNAL CORNER DETAIL

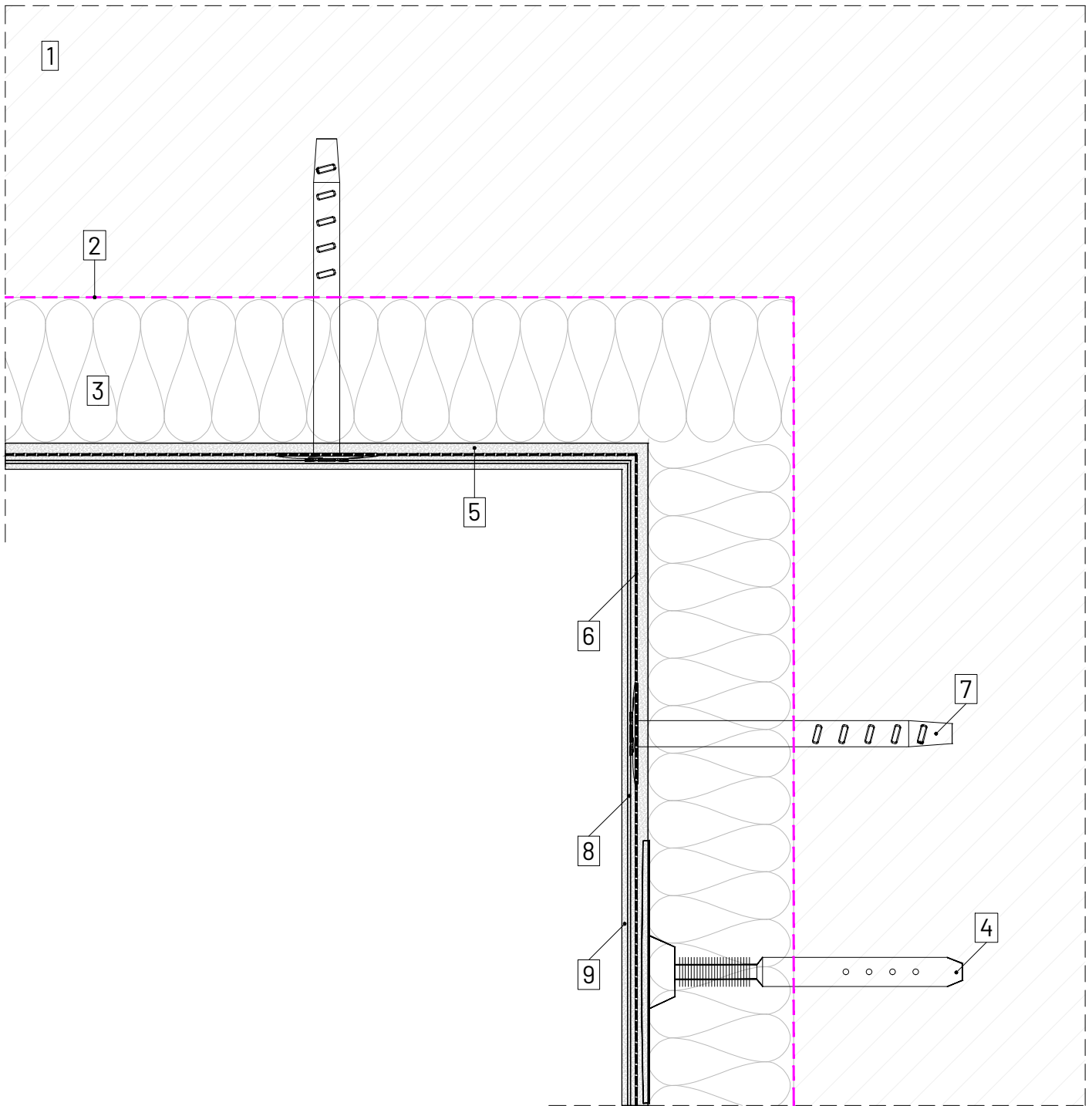
date:
May 2022

scale:
NTS
@A4

system no:
CMS-50R

drawing no:
02

rev:
X



LEGEND

- 1.** SUBSTRATE **2.** BREATHER MEMBRANE by others **3.** TERRAWOOL RAINCLAD PLUS 140 **4.** INSULATION SUPPORT FIXINGS
- 5.** SCRIM ADHESIVE **6.** FIBRE REINFORCING MESH **7.** FIBRE MESH FIXINGS **8.** PRIMER **9.** RENDER **10.** STARTER PROFILE **11.** FIRE RATED SILICONE JOINT SEALANT by others **12.** JOINT SEALANT



www.cladmate.co.uk | technical@cladmate.co.uk

system title:
INSULATED RENDER CLADDING SYSTEM

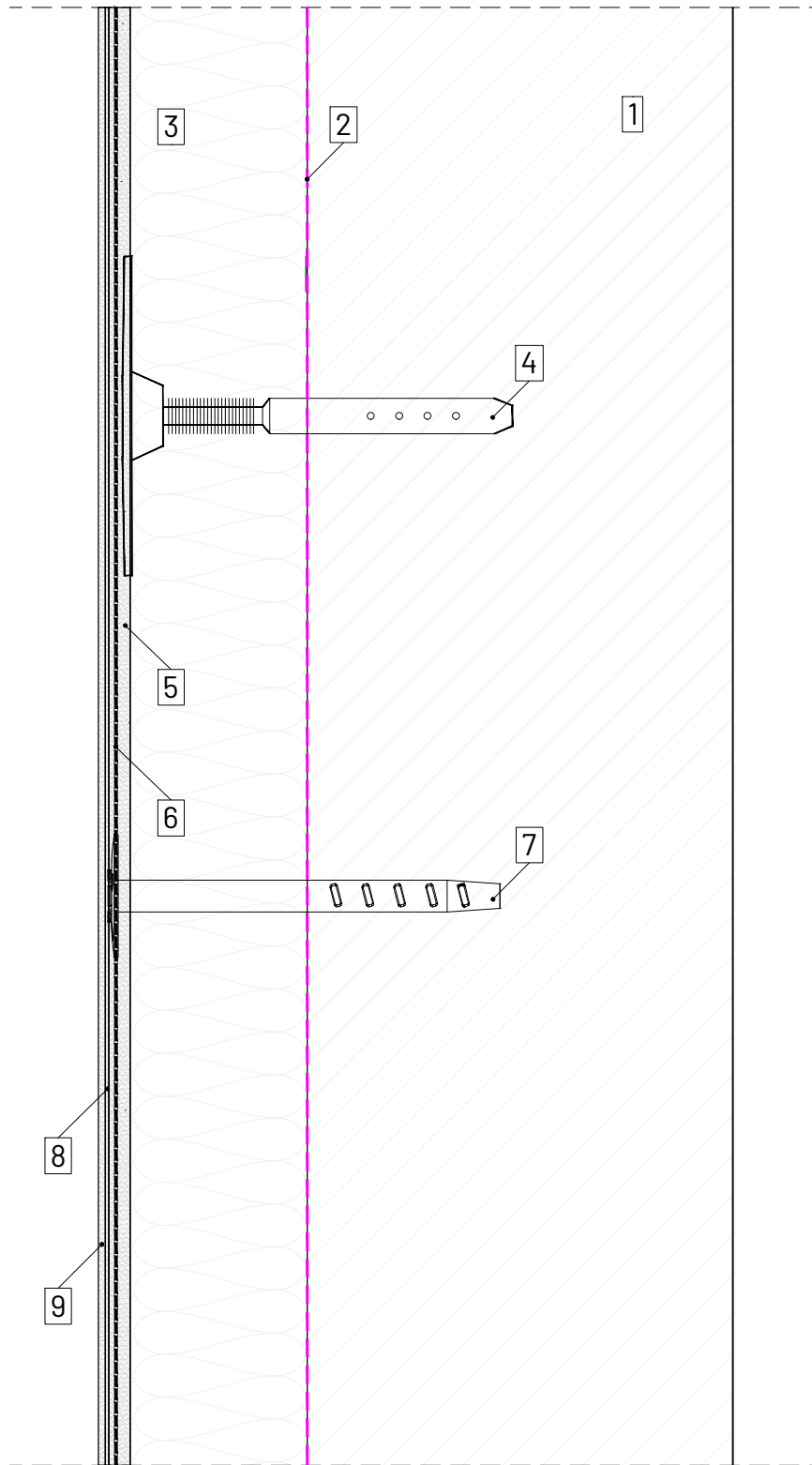
drawing title:
INTERNAL CORNER DETAIL

date:
May 2022

scale:
NTS
@A4

system no:
CMS-50R

drawing no: 03
rev: X



LEGEND

1. SUBSTRATE 2. BREATHER MEMBRANE by others 3. TERRAWOOL RAINCLAD PLUS 140 4. INSULATION SUPPORT FIXINGS
 5. SCRIM ADHESIVE 6. FIBRE REINFORCING MESH 7. FIBRE MESH FIXINGS 8. PRIMER 9. RENDER 10. STARTER PROFILE 11. FIRE RATED SILICONE JOINT SEALANT by others 12. JOINT SEALANT



www.cladmater.co.uk | technical@cladmater.co.uk

system title:
INSULATED RENDER CLADDING SYSTEM

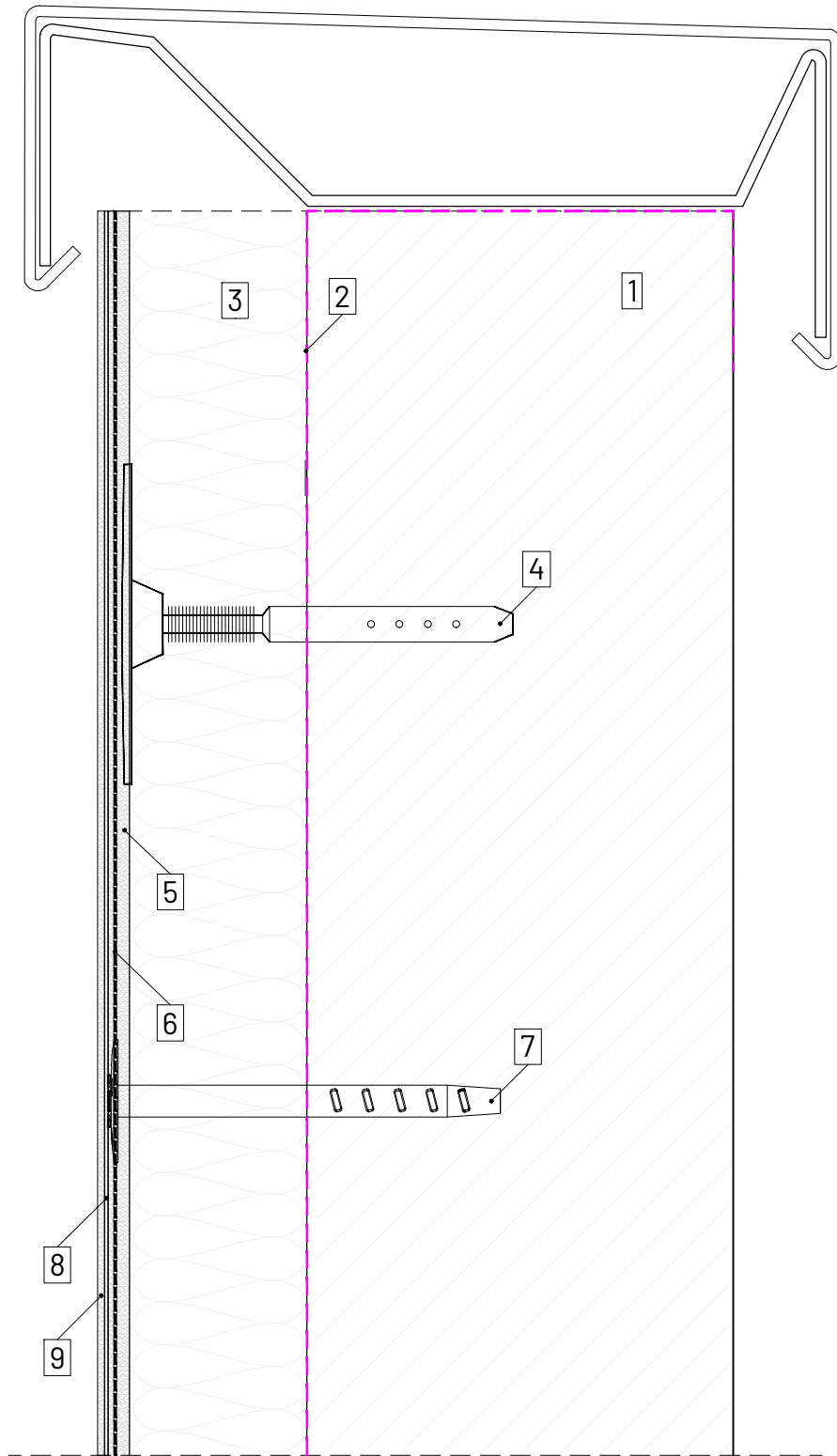
drawing title:
VERTICAL SECTION DETAIL

date:
May 2022

scale:
NTS
@A4

system no:
CMS-50R

drawing no: 04 rev: X



LEGEND

- 1.** SUBSTRATE **2.** BREATHER MEMBRANE by others **3.** TERRAWOOL RAINCLAD PLUS 140 **4.** INSULATION SUPPORT FIXINGS
- 5.** SCRIM ADHESIVE **6.** FIBRE REINFORCING MESH **7.** FIBRE MESH FIXINGS **8.** PRIMER **9.** RENDER **10.** STARTER PROFILE **11.** FIRE RATED SILICONE JOINT SEALANT by others **12.** JOINT SEALANT



www.cladmate.co.uk | technical@cladmate.co.uk

system title:
INSULATED RENDER CLADDING SYSTEM

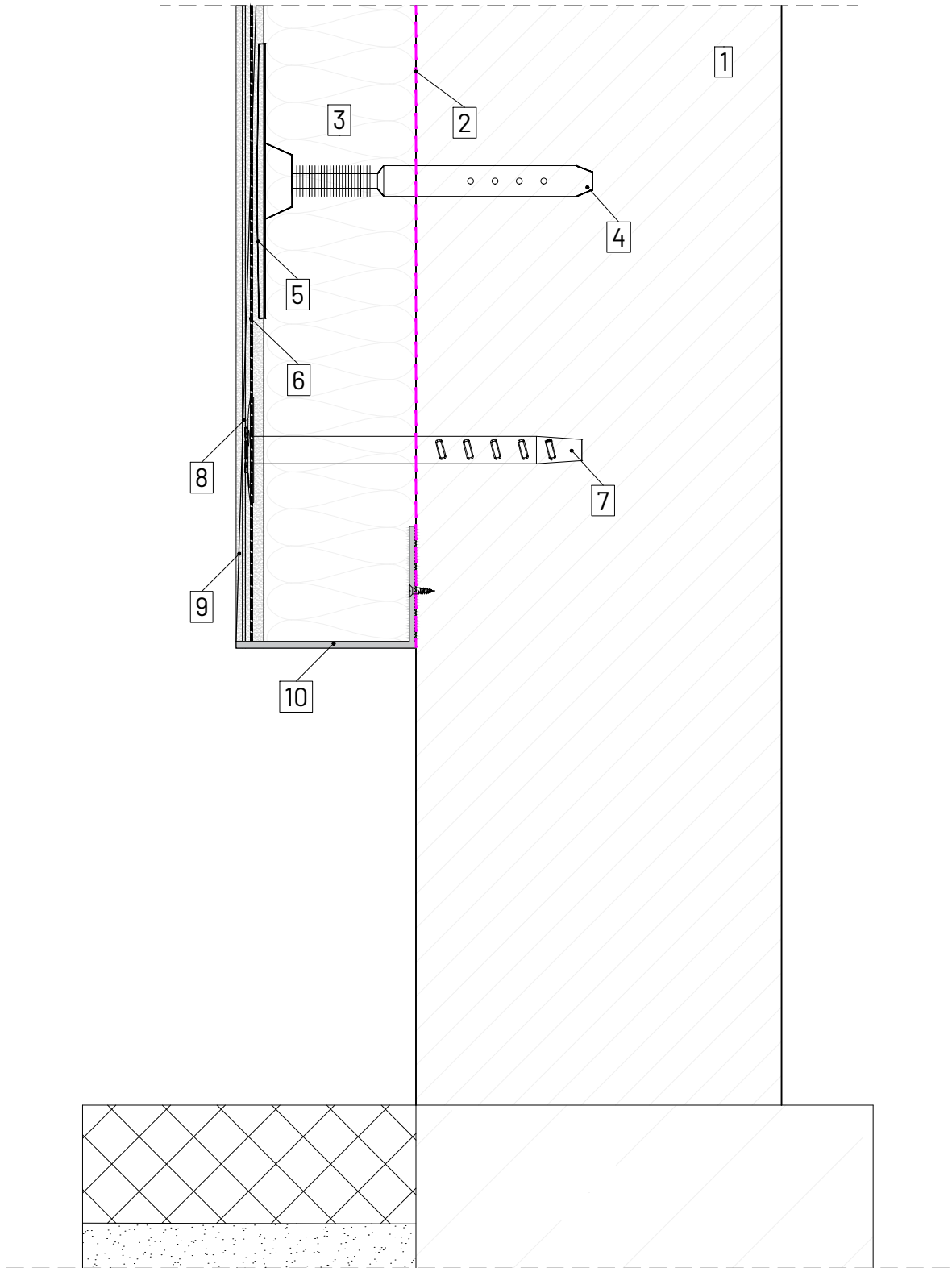
drawing title:
PARAPET DETAIL

date:
May 2022

scale:
NTS
@A4

system no:
CMS-50R

drawing no: 05
rev: X



LEGEND

1. SUBSTRATE **2.** BREATHER MEMBRANE by others **3.** TERRAWOOL RAINCLAD PLUS 140 **4.** INSULATION SUPPORT FIXINGS
5. SCRIM ADHESIVE **6.** FIBRE REINFORCING MESH **7.** FIBRE MESH FIXINGS **8.** PRIMER **9.** RENDER **10.** STARTER PROFILE **11.** FIRE RATED SILICONE JOINT SEALANT by others **12.** JOINT SEALANT



www.cladmate.co.uk | technical@cladmate.co.uk

system title:
INSULATED RENDER CLADDING SYSTEM

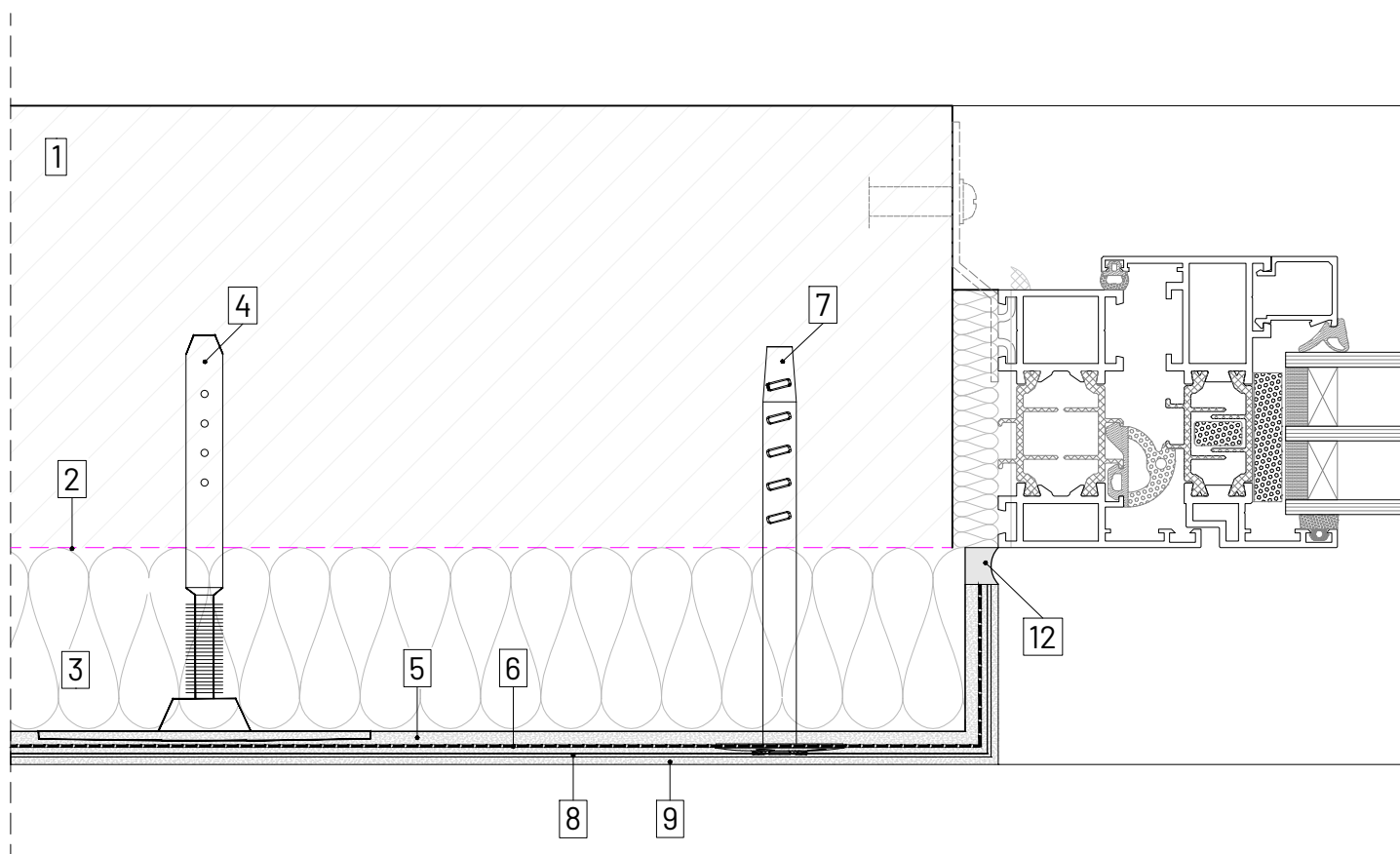
drawing title:
BASE DETAIL

date:
May 2022

scale:
NTS
@A4

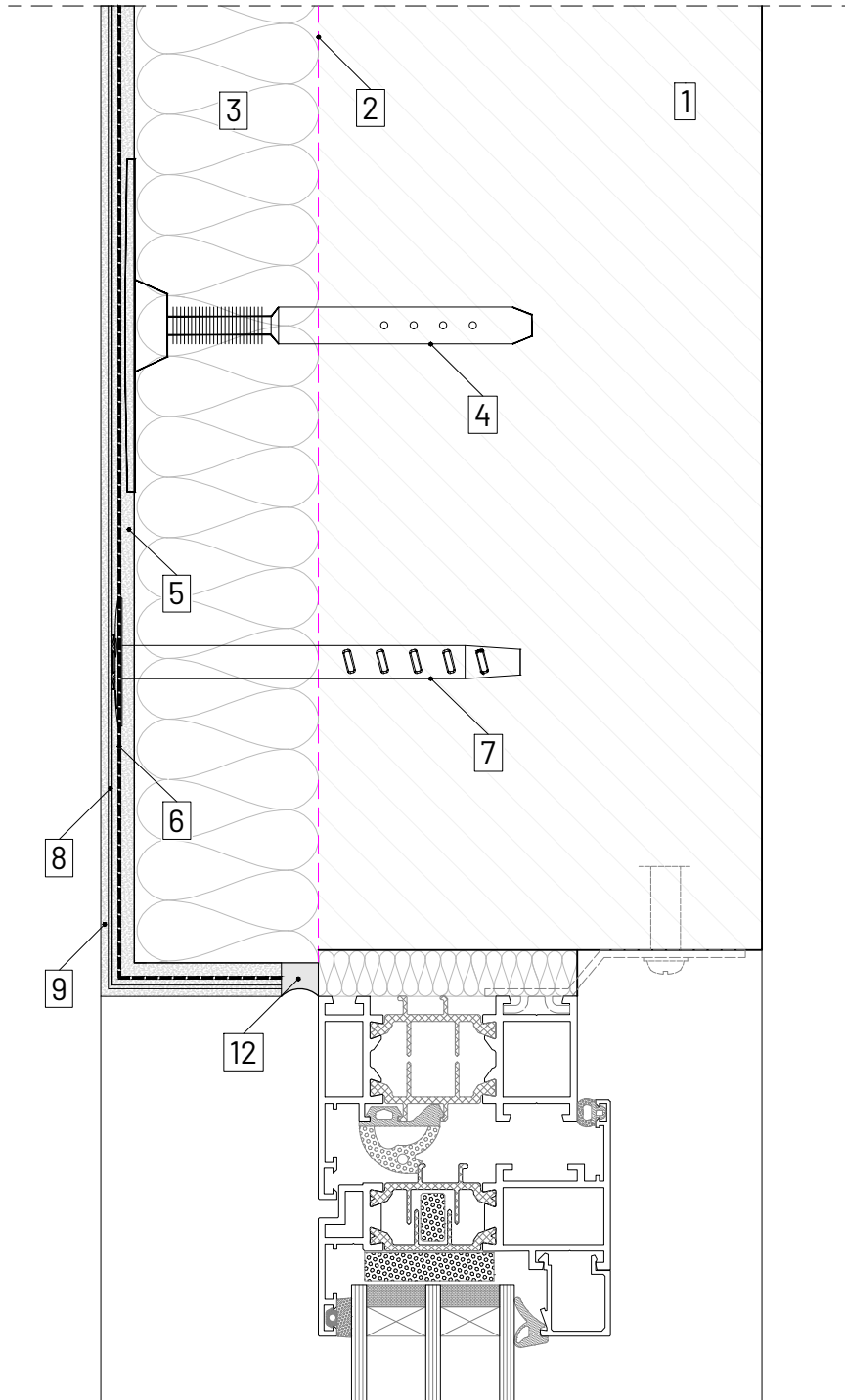
system no:
CMS-50R

drawing no: 06
rev: X



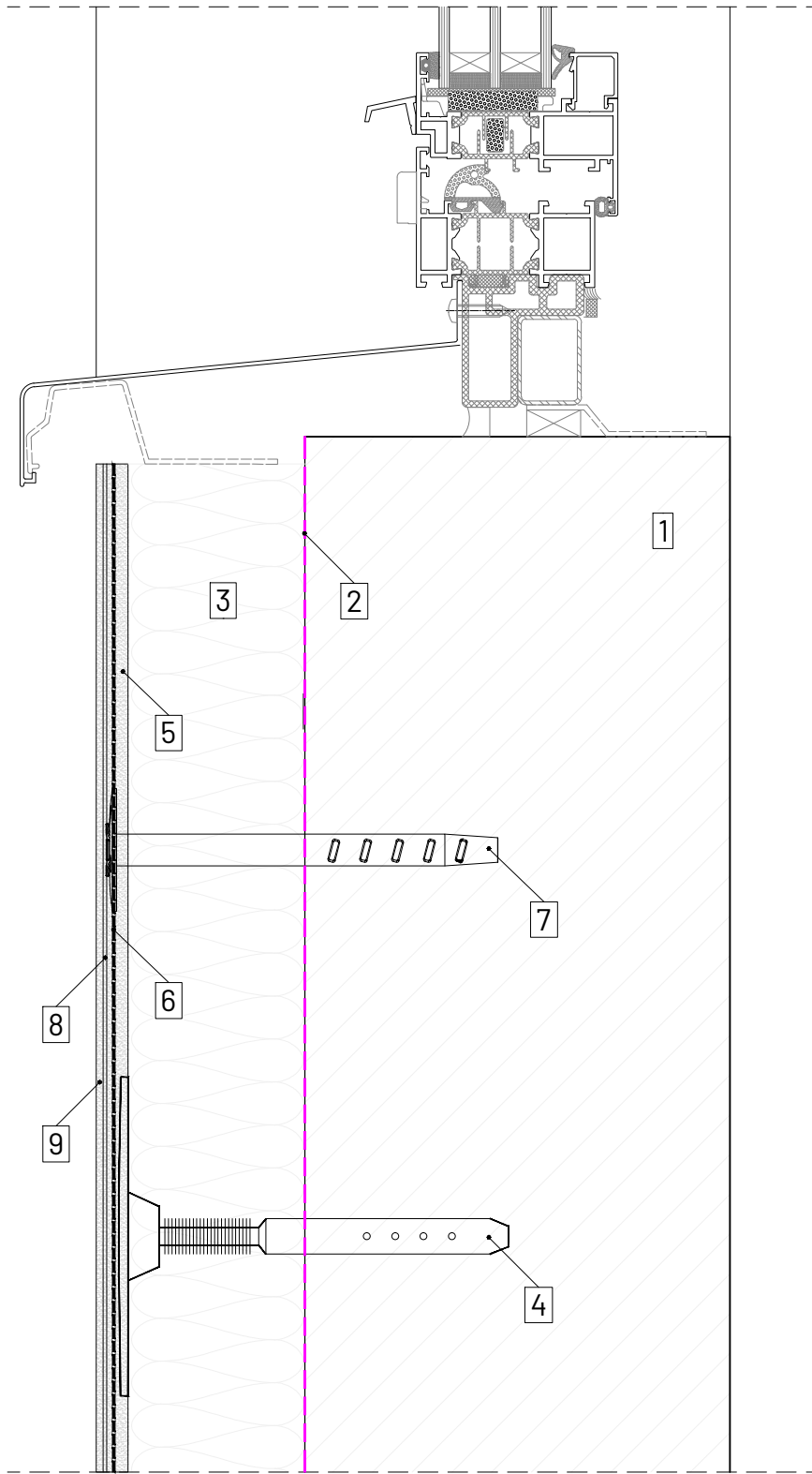
LEGEND

1. SUBSTRATE 2. BREATHER MEMBRANE by others 3. TERRAWOOL RAINCLAD PLUS 140 4. INSULATION SUPPORT FIXINGS
 5. SCRIM ADHESIVE 6. FIBRE REINFORCING MESH 7. FIBRE MESH FIXINGS 8. PRIMER 9. RENDER 10. STARTER PROFILE 11. FIRE RATED SILICONE JOINT SEALANT by others 12. JOINT SEALANT



LEGEND

1. SUBSTRATE 2. BREATHER MEMBRANE by others 3. TERRAWOOL RAINCLAD PLUS 140 4. INSULATION SUPPORT FIXINGS
 5. SCRIM ADHESIVE 6. FIBRE REINFORCING MESH 7. FIBRE MESH FIXINGS 8. PRIMER 9. RENDER 10. STARTER PROFILE 11. FIRE RATED SILICONE JOINT SEALANT by others 12. JOINT SEALANT



LEGEND

- 1.** SUBSTRATE **2.** BREATHER MEMBRANE by others **3.** TERRAWOOL RAINCLAD PLUS 140 **4.** INSULATION SUPPORT FIXINGS
- 5.** SCRIM ADHESIVE **6.** FIBRE REINFORCING MESH **7.** FIBRE MESH FIXINGS **8.** PRIMER **9.** RENDER **10.** STARTER PROFILE **11.** FIRE RATED SILICONE JOINT SEALANT by others **12.** JOINT SEALANT



www.cladmate.co.uk | technical@cladmate.co.uk

system title:
INSULATED RENDER CLADDING SYSTEM

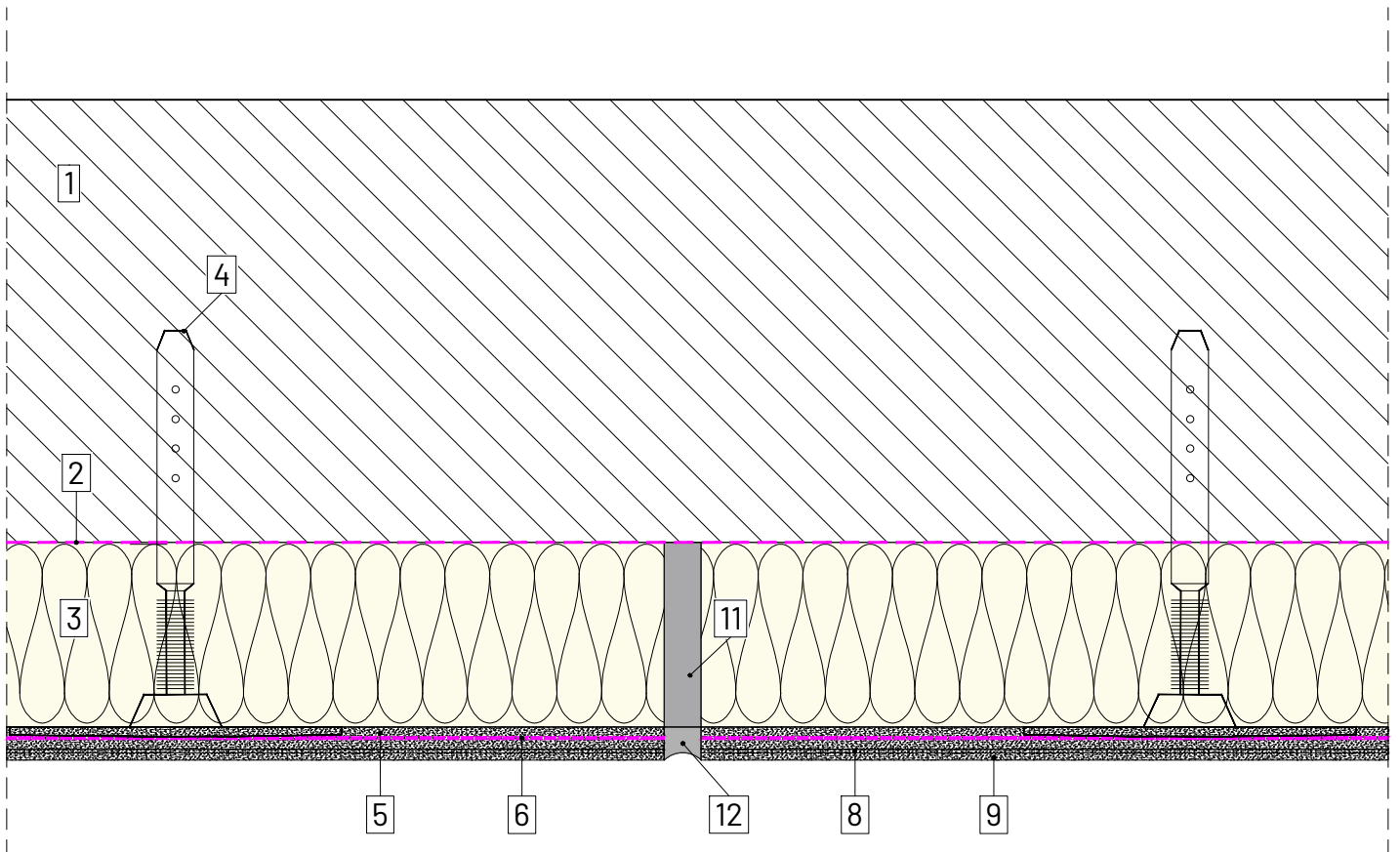
drawing title:
WINDOW CILL DETAIL

date:
May 2022

system no:
CMS-50R

scale:
NTS
@A4

drawing no: 09
rev: X



LEGEND

- 1.** SUBSTRATE **2.**BREATHER MEMBRANE by others **3.**TERRAWOOL RAINCLAD PLUS 140 **4.**INSULATION SUPPORT FIXINGS
- 5.**SCRIM ADHESIVE **6.** FIBRE REINFORCING MESH **7.** CORNER BEAD **8.** PRIMER **9.** RENDER **10.** STARTER PROFILE **11.** FIRE RATED SILICONE JOINT SEALANT by others **12.** JOINT SEALANT

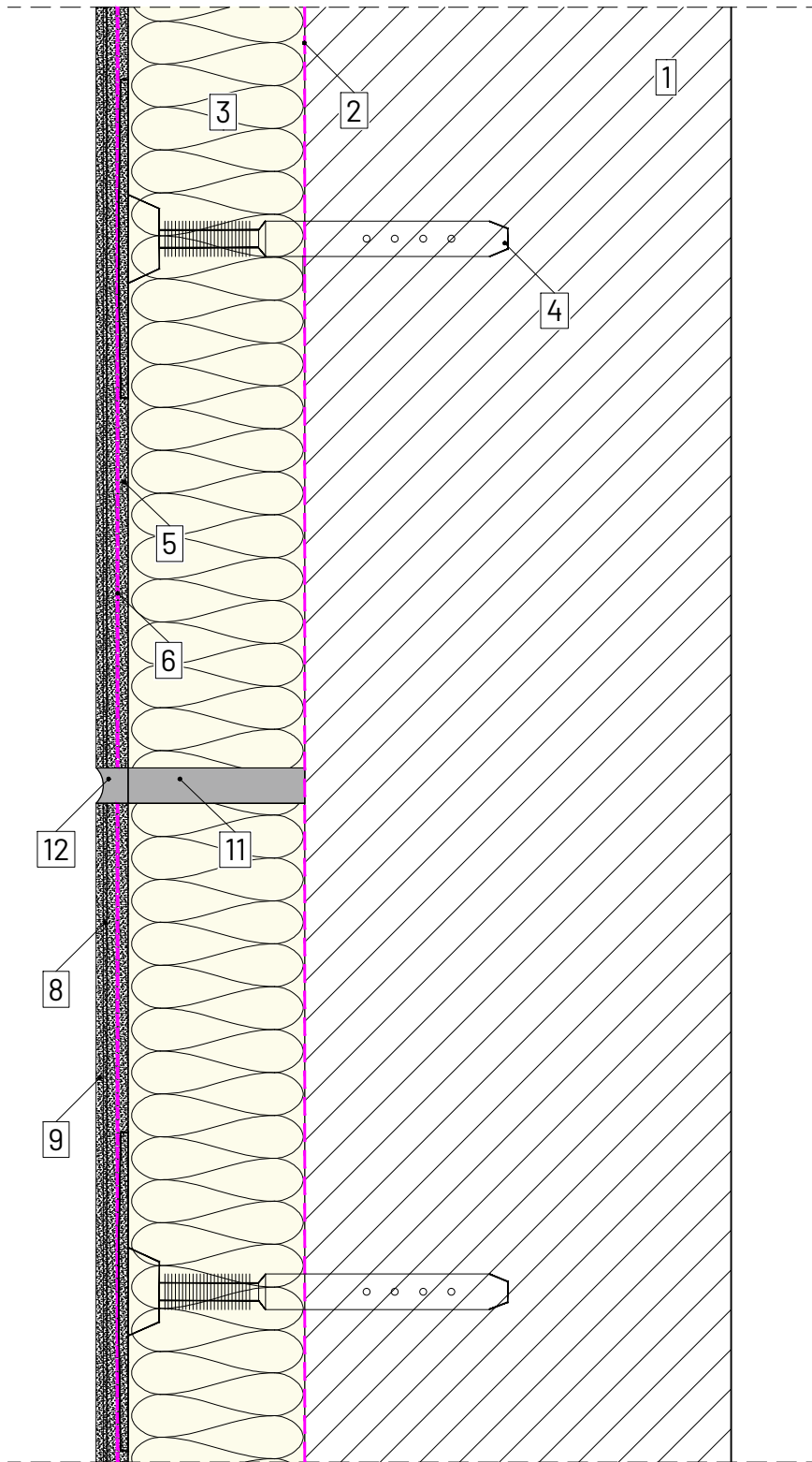


system title:
INSULATED RENDER CLADDING SYSTEM

date: May 2022 scale: NTS @A4

drawing title:
VERTICAL MOVEMENT JOINT DETAIL

system no: CMS-50R drawing no: 10 rev: X



LEGEND

- 1.** SUBSTRATE **2.** BREATHER MEMBRANE by others **3.** TERRAWOOL RAINCLAD PLUS 140 **4.** INSULATION SUPPORT FIXINGS
- 5.** SCRIM ADHESIVE **6.** FIBRE REINFORCING MESH **7.** CORNER BEAD **8.** PRIMER **9.** RENDER **10.** STARTER PROFILE **11.** FIRE RATED SILICONE JOINT SEALANT by others **12.** JOINT SEALANT



www.cladmater.co.uk | technical@cladmater.co.uk

system title:
INSULATED RENDER CLADDING SYSTEM

drawing title:
HORIZONTAL MOVEMENT JOINT DETAIL

date:
May 2022

scale:
NTS
@A4

system no:
CMS-50R

drawing no:
11

rev:
X